



Contact Lindsay Dey
Managing Director

Phone: 03 477 8779
lindsay.dey@impactconsulting.co.nz
www.impactconsulting.co.nz



Nelson Turf - Opening Day



McMillan Centre Dunedin

Experience

Impact Consulting has worked for sporting organisations, including Hockey Associations, for over 20 years. To give you a feel for how we may be able to assist your club or association, included below is a brief profile of some of our past Hockey projects.

• Southland Hockey Association

Southland Hockey's objective is the simultaneous establishment of 2 international standard water turfs in Invercargill. This additional turf has meant the relocation of hockey to a new site and required negotiations with Council, Rugby and Cricket. Impact Consulting have been involved since the design stage of the project, right through to project management.

- SERVICES:**
- Resource and building consent assistance
 - Turf design facilitation and management
 - Professional tendering and tender assessment services
 - Project Management

• Marlborough Hockey Association

Impact Consulting have recently completed a detailed feasibility study for the replacement of the Marlborough Hockey's artificial surface in Blenheim. Our involvement in this project included assessment of stakeholder requirements and facilitation of stakeholder discussions in relation to a holistic assessment of the entire site. This perspective was an important aspect of the project, as the turf is situated on Marlborough Boys College grounds (Ministry of Education land) and has resulted in a decision by council staff to move towards taking over management of the artificial surface and associated grounds.

- SERVICES:**
- Detailed artificial surface replacement feasibility report including;
 - Stakeholder requirements research & assessment
 - Detailed surface and facility development options and considerations
 - Funding strategy and operational budget
 - Suggested governance and management structure
 - Annual plan submission review

• Nelson Hockey Association

Impact Consulting worked closely with the Nelson Hockey Association throughout the entire establishment process for their international standard water turf.

- SERVICES:**
- Detailed feasibility study (aided in securing funding and council support)
 - Fundraising planning and assistance
 - Facilitation of discussions with Nelson City & Tasman District Council's
 - Turf design facilitation and management
 - Professional tendering and tender assessment services
 - Project Management

• Otago Hockey Association

Establishment of the McMillan Centre Pavilion and Dunedin's international standard water turf. Facilitation, coordination and project management services were critical to success.

- SERVICES:**
- Detailed feasibility study
 - Fundraising coordination
 - Construction tender management
 - Full Project Management



Keeping you ahead of the game™

admin@impactconsulting.co.nz
www.impactconsulting.co.nz
Phone: 03 477 8779
Fax: 03 477 9099

Impact Consulting is a Dunedin based multidisciplinary consulting team, primarily focussed on community and business development projects in the areas of sport, education and tourism.

Guaranteed:

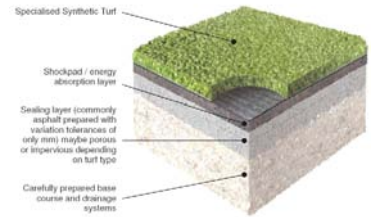
Our experience in a wide range of regional development projects for local and regional authorities, sports clubs, businesses and independent organisations, guarantees your project the best possible chance of success.

Skill Set:

Our multidisciplinary team of consultants provide you with a focused and professional team, capable of taking a project from conception or feasibility right through to construction, marketing and management.

Skills include: project management, financial modelling, feasibility assessments, development projects, accounting, human resource management, research and analysis, marketing, brand management and design.

A team of passionate professionals to support your team and *Keep you ahead of the game™*.



Project: Full feasibility study and impartial research for the upgrade of public toilets and shared sports pavilion facilities on Greenmeadows Reserve.

Services: Focus groups, a comprehensive survey of public, local residents, mediation between parties, financial modelling & reporting.

Client: Nelson City Council

CONSULTATION & MEDIATION

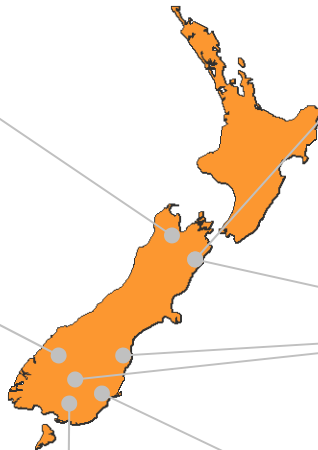
Project: Detailed feasibility study for the replacement of Blenheim's all-weather surface

Services: Stakeholder discussions, user survey, requirements assessment, option presentation, preliminary costing, reporting and recommendations.

Client: Marlborough District Council & Marlborough Hockey

FEASIBILITY REPORT

EXAMPLE PROJECTS



Project: Targeted promotion for Dunedin Student market.

Services: 2008 student discount card design and development. Distribution and print management. Negotiation of a complementary offer from an additional business.

Client: Pinewood (one of Queenstown's largest accommodation providers)

MARKETING & PROMOTION

Project: Physical Activity Strategy and Implementation Plan Development.

Services: Development of detailed regional strategies based on public research, literature review and situation assessment.

Clients: Central Otago District Council, Marlborough District Council, Waitaki District Council (SPARC initiative)

STRATEGY DEVELOPMENT

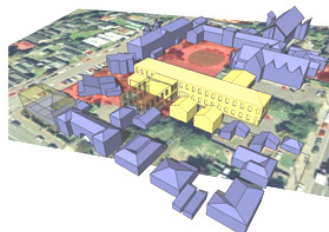


Project: Establishment of two international standard water turfs in Invercargill.

Services: Pre-planning, tender process management, project and construction management.

Client: Hockey Southland

PROJECT MANAGEMENT



Project: Redevelopment options and feasibility.

Services: Focus groups, survey, financial modelling, development options assessment & presentation.

Client: Selwyn College

DEVELOPMENT OPTIONS